

## WASH DOWN DUTY – SEVERE DUTY



Cat. #E294

### Features

- Double sealed ball bearings
- 303 stainless steel shafts with contact lip seal and V-ring slinger
- USDA approved white epoxy paint
- Class F insulation 10:1 constant torque (3 phase)
- No protection provided in the motor against excessive heating (thermal overload)
- Selected EPAAct (★) & Energy Saver (◆) designs available

### Applications

Designed for use in applications requiring frequent high pressure wash down, such as food processing plants, canneries, car washes, or other applications where motor is exposed to water or high humidity.

### Single Phase – NEMA C-Face Mounting With Base – Totally Enclosed

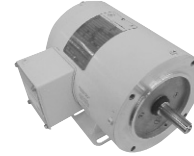
HP	RPM	Volts	NEMA Frame	SF	Nom. Eff.	Base	FLA @ NP	Catalog No.	List Price	Notes
1/2	1725	115/208-230	56C	1.25	66	WB	8.8/4.6-4.4	C1285	\$319	
3/4	1725	115/208-230	56C	1.25	70	WB	10.8/5.6-5.4	C1286	359	
1	3450	115/208-230	56C	1.25	70	WB	12/6.2-6	C1287	407	
	1725	115/208-230	56C	1.15	75	WB	12.8/6.6-6.4	C1288	425	
1.5	3450	115/208-230	56C	1.15	72	WB	17/8.8-8.5	C1289	479	
	1725	115/208-230	56C	1.15	79	WB	17.2/8.8-8.6	C1290	530	36

### Three Phase – NEMA C-Face Mounting – Totally Enclosed – No Base

1/2	1725/1425	208-230/460	56C	1.25	78.5	NB	1.7-1.8/0.9	E294◆	\$319	55,84
3/4	1725/1425	208-230/460	56C	1.25	80	NB	2.5-2.8/1.4	E295◆	350	55,84
1	1725/1425	208-230/460	56C	1.15	82.5	NB	3.2-3.2/1.6	E296◆	366	55,84
	1725/1425	208-230/460	145TC	1.15	82.5	NB	3.2-3.2/1.6	E297◆	375	55,84
	1725/1425	208-230/460	145TC	1.15	84	NB	4.4-5.3/2.65	K2055★	408	84
	1725/1425	208-230/460	56C	1.15	84	NB	4.4-5.3/2.65	K2068★	399	84
2	1725/1425	208-230/460	56C	1.15	84	NB	6-5.6/2.8	K2066★	430	84
	1725/1425	208-230/460	145TC	1.15	84	NB	6-5.6/2.8	K2056★	439	84

- ★ Meet EPAAct efficiency levels
- ◆ Energy Saver design

## WASH DOWN DUTY – SEVERE DUTY



Cat. #E303

### Features

- Double sealed ball bearings
- 303 stainless steel shafts w/contact lip seal & V-ring slinger
- USDA approved white epoxy paint
- Class F insulation 10:1 constant torque (3 phase)
- No protection provided in the motor against excessive heating (thermal overload)
- Selected EPAAct (★) & Energy Saver (◆) designs available

### Applications

Designed for use in applications requiring frequent high pressure wash down such as food processing plants, canneries, car washes, or other applications where motor is exposed to water or high humidity.

### Three Phase – NEMA C-Face Mounting With Base – Totally Enclosed

HP	RPM	Volts	NEMA Frame	SF	Nom. Eff.	Base	FLA @ NP	Catalog No.	List Price	Notes
1/2	3450/2850	208-230/460	56C	1.25	82.5	WB	1.7-1.6/0.8	E302◆	\$270	55,84
	1725/1425	208-230/460	56C	1.25	78.5	WB	1.7-1.8/0.9	E303◆	319	55,84
	1725	575	56C	1.25	78.5	WB	0.72	E304◆	319	55
3/4	3450/2850	208-230/460	56C	1.25	84	WB	2.6-2.4/1.2	E305◆	301	55,84
	1725/1425	208-230/460	56C	1.25	80	WB	2.5-2.8/1.4	E306◆	354	55,84
	1725	575	56C	1.25	81	WB	1.0	E307◆	354	55
1	3450/2850	208-230/460	56C	1.25	85.5	WB	3.2-2.8/1.4	E308◆	352	55,84
	1725/1425	208-230/460	56C	1.15	82.5	WB	3.2-3.2/1.6	E309◆	372	55,84
	1725/1425	208-230/460	145TC	1.15	82.5	WB	3.2-3.2/1.6	E310◆	383	55,84
	1725	575	56C	1.15	82.5	WB	1.2	E311◆	372	55
1.5	3450/2850	208-230/460	56C	1.15	82.5	WB	4.4-4/2	E312◆	405	84
	1725/1425	208-230/460	56C	1.15	84	WB	4.4-5.3/2.65	K2067★	403	84
	1725/1425	208-230/460	145TC	1.15	84	WB	4.4-5.3/2.65	K2058★	414	
	1725	575	145TC	1.15	84	WB	1.75	K2059★	414	
2	3450	208-230/460	145TC	1.15	84	WB	5.6-5.2/2.6	K2060★	447	84
	1725/1425	208-230/460	145TC	1.15	84	WB	6-5.6/2.8	K2061★	447	84
	1725/1425	208-230/460	56C	1.15	84	WB	6-5.6/2.8	K2065★	435	84
	1725	575	145TC	1.15	84	WB	2.25	K2062★	447	
3	3450	230/460	145TC	1.15	85.5	WB	7.6/3.8	K2063★	518	84

### Three Phase – Base Mounting – Totally Enclosed

1/3	1725/1425	208-230/460	56	1.35	75.5	WB	1.2-1.6/8	E286◆	\$302	55,84
1/2	1725/1425	208-230/460	56	1.25	77	WB	1.7-1.8/9	E287◆	312	55,84
3/4	1725/1425	208-230/460	56	1.25	80	WB	2.5-2.8/1.4	E288◆	343	55,84
	1140	208-230/460	143T	1.15	80	WB	3.2-3/1.5	E289◆	451	
1	1725/1425	208-230/460	143T	1.15	82.5	WB	3.2-3.2/1.6	E290◆	372	55,84
	1140/950	208-230/460	145T	1.15	80	WB	3.6-4.2/2.1	K2051★	510	84
1.5	1725/1425	208-230/460	145T	1.15	84	WB	4.4-5.3/2.65	K2052★	405	84
2	1725/1425	208-230/460	145T	1.15	84	WB	6-5.6/2.8	K2053★	440	84

- ★ Meet EPAAct efficiency levels
- ◆ Energy Saver design



GE Commercial Motors

By REGAL-BELOIT

Data subject to change without notice